

Country: UNITED KINGDOM
State: offshore
Longitude: 0 1 29.842N
Latitude: NCS 1984
UTM East: 628954.000 m (Eurasia)
UTM North: 628954.000 m (ITD)
UTM East: 628954.000 m (ITD)
UTM North: 628954.000 m (ITD)
UTM East: 628954.000 m (ITD)
UTM North: 628954.000 m (ITD)

Table with columns: Well Name, Direction, Depth, Date, Status, etc. Includes data for well 27/10-1.

Table with columns: Logging Run, Date, No, Meter, Meter per Foot, Contractor, Log, Depth, etc. Includes data for logging runs 1 through 7.

Table with columns: Run, Well Type, Meter, Meter per Foot, Density, Velocity, etc. Includes data for runs 1 through 7.

Remarks:
UNIT PRODUCTION/ANALYSIS/COMPARISON 27\_1\_1\_18\_127\_10\_127\_10-1\_Lum\_1\_Compounds

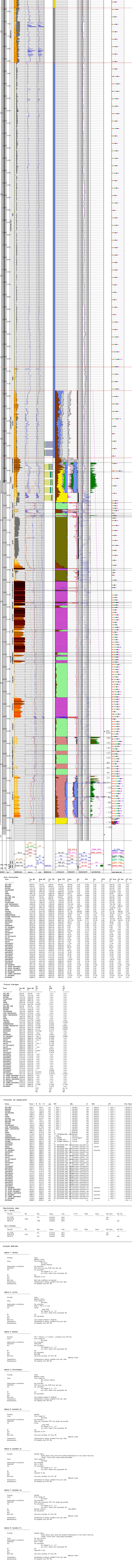


Table with columns: Zone Summaries, Top MD, Base MD, TTD, Base TVD, Gross, Net, NTO, Pay, HCFY, AVT One, AVT Two, AVT Three, AVT Four. Includes data for various geological zones.

Table with columns: Zone, Top MD, Base MD, VS, FSI, FSI Fr, FSI Fr, FSI Fr. Includes data for channel averages.

Table with columns: Parameter set assignments, Name, From, To, Units, etc. Includes data for various parameter sets.

Table with columns: Discontinuity cells, Well, Channel, Volume, etc. Includes data for discontinuity cells.

Table with columns: Analysis Methods, Method, Porosity, etc. Includes data for analysis methods.

Table with columns: Petrophysical data sets, Set, Unit, Matrix, Fluid, etc. Includes data for petrophysical data sets.